



L'ECCELLENZA DEL MIGLIOR ESPRESSO FIRMATO LAVAZZA  
THE EXCELLENCE OF THE BEST LAVAZZA ESPRESSO



**Istruzioni per l'uso**  
**Instructions**  
**Mode d'emploi**  
**Bedienungsanleitung**  
**Instrucciones de empleo**  
**Instruções de utilização**  
**Gebruiksaanwijzing**

Leggere attentamente  
le istruzioni

Read the instructions  
carefully

Lire attentivement  
le mode d'emploi

Bedienungsanleitung bitte  
aufmerksam durchlesen

Leer atentamente  
las instrucciones

Ler atentamente  
as instruções

De instructies  
aandachtig lezen



LB 951



 **Purpose of appliance:**

This appliance is intended to be used in household and similar applications such as:

- staff kitchen areas in shops, **offices** and other working environments;
- farm houses;
- by clients in hotels, motels and other residential type environments;
- bed and breakfast type environments.

Any improper use, not provided for by these instructions, is strictly forbidden. Likewise, no technical modification must be made. This device can be used by children, typically 8 years of age and older, if watched closely or properly trained on using the device safely and provided that they are aware of the connected dangers. Cleaning and maintenance operations should not be carried out by children unless older than 8 years of age and supervised. Keep the device and the relevant power cord out of reach of children under 8 years of age. This device can be used by persons with impaired physical, sensory or mental capacities, or persons with no practice or skill, if watched closely or properly trained on using the device safely and provided that they are aware of the connected dangers. Do not let children play with the device.

 **Location:**

Position the coffee machine in a safe place where no one can overturn it or be harmed by it. Do not keep the machine at temperatures below 4°C since freezing could damage it. Do not use the coffee machine outside. Do not put the machine on very hot surfaces and/or near open flames.

 **Power supply:**

Connect the coffee machine to an adequate power supply socket. The voltage should correspond to that indicated on the machine's plate.

 **Power cable:**

Do not use the coffee machine with a defective or damaged power cable. In such cases, the defective cable must be replaced immediately. Do not pass the power cable around sharp corners or edges or over very hot objects and protect it from oil. Do not carry or pull the machine by its cable. Do not pull the plug by the cable. Do not touch it with wet hands. Do not let the cable dangle freely from tables or shelves.

 **Danger of electrocution:**

Never bring live electrical parts into contact with water.

 **Protection of others:**

Keep children under supervision and do not allow them to play with the machine. Children do not understand the dangers inherent in electrical appliances. Do not leave the machine's packing materials within reach of children.

 **Danger of burns:**

Do not touch the hot parts (the capsule holder, etc.) just after using the machine. Be careful of hot liquid spurting while the coffee is issuing from the spout.

 **Cleaning:**

Before cleaning the machine, it is essential to take the plug out of the socket and wait until the machine has cooled down. Do not immerse the machine in water! It is forbidden to interfere with the inner workings of the machine. Do not use the water in the tank for food purposes.

 **Care of the machine:**

When the machine is unused for a prolonged period of time, unplug the machine and store it in a dry place out of the reach of children. Protect it from dust and dirt.

 **Repairs / Maintenance:**

In case of malfunction, defects or suspected defects after it has been dropped, unplug the machine immediately. Do not operate a defective machine. Only Authorised Service Centres can intervene and make repairs. In case of repairs which are not done up to standard, the company declines all responsibility for any damages.

 **Water tank:**

Fill the tank only with cold fresh, non-bubbly drinking water. Do not operate the machine if the water is not above at least the minimum level indicated on the tank.

 **Capsule insertion space:**

Only Lavazza BLUE capsules must be inserted in the capsule insertion space, do not insert fingers or any other object. Capsules are to be used only once.

 **Disposal of the machine at the end of its life (European Directive 2002/96/EC – Decree Law No. 151 of 25 July 2005):**

The symbol on the base of the machine and/or on its packaging indicates that the machine when it has reached the end of its useful life must not be disposed of with normal wastes. The machine should be taken to one of the separated wastes centres specific to the collection of electric and electronic wastes in Italy or turned in to the retailer when purchasing a new model on a one-to-one basis. The user is responsible for disposing of the machine at the appropriate collection structures on penalty of the sanctions provided for by current legislation on such matters. Adequate separate collection of such machines for re-cycling and/or disposal compatible with the environment contributes to preventing any possible negative effects on the environment and on health and favours the re-use and/or re-cycling of materials which make up the machine. For more detailed information on the collection system available, please contact your local waste disposal service or retailer where you bought the machine.

Capsule loader lever

Capsule insertion space

Pre-dosed coffee supply buttons

Freely dosed coffee supply button

Coffee spout

Upper cup-support rack

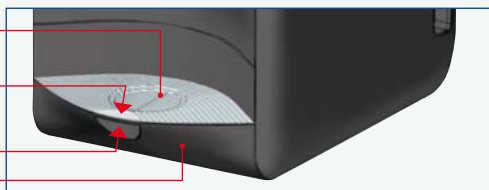
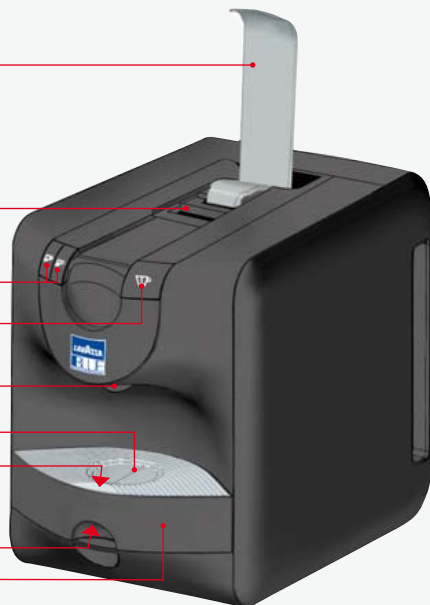
Upper drop collecting tray handle

Upper drop collecting tray

Lower cup-support rack

Lower drop collecting tray/  
used capsule drawer handle

Lower drop collecting tray/  
used capsule drawer



Water tank lid

Water tank

General switch

Power cable

**!** *The company will not be responsible for any damages in the following cases:*

- *incorrect use and not in conformity with the intended purpose;*
  - *repairs made by other than an authorised service facility;*
  - *tampering with the power cable;*
  - *tampering with any part of the machine;*
  - *use of spare parts and accessories other than the originals;*
  - *failure to decalcify;*
  - *storage in a place at a temperature below 4°C;*
  - *use of capsules other than those indicated.*
- The guarantee is no longer valid in these cases.*

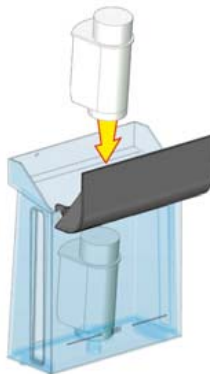
### MACHINE START UP

**!** *Position the machine on a flat stable surface away from sources of water and heat. Ensure that the machine is disconnected from power supply. Any damages caused to the machine through failure to follow these instructions are not covered by the guarantee.*

**i** *The use of a water filter (an optional accessory) improves water quality and prolongs machine life.*

*Use the AquaAroma Crema Brita for Lavazza filter.*

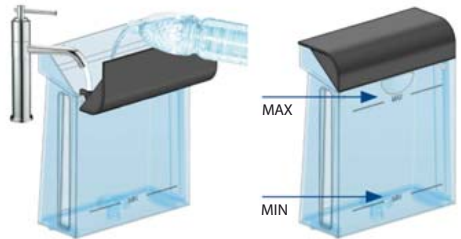
*In order to insert the filter, follow the instruction sheet which comes with the accessory.*



**1** Lift out the water tank and open the lid.

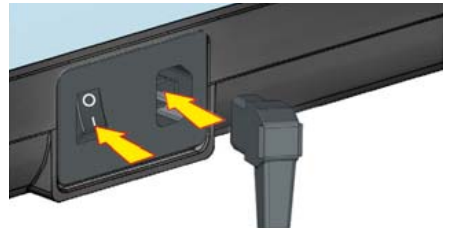


**2** Fill the water tank up to the MAX level indicated using only fresh, non-bubbly, drinking water.



**!** *Hot water and other liquids can damage the tank. Do not operate the machine without water; ensure that the water level is above the MIN indicator.*

**3** Plug in the machine and press the general switch, setting it at the **I** position. The supply buttons blink alternately. When the buttons come ON steadily, the machine is ready for use.



**DISPENSING COFFEE**

The machine will not supply the product until it reaches the operating temperature. The supply buttons blink alternately during the heating cycle.

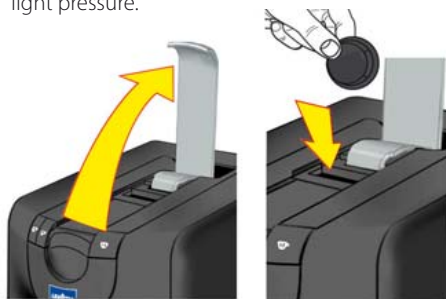
- i** *The machine will be ready for use when the lever reaches the rest position and the supply buttons come ON steadily.*



- 1** Position the cup under the coffee spout.



- 2** Raise the capsule loader lever and place the capsule in the capsule insertion space applying light pressure.




- !** *Do not put fingers or other objects in the capsule insertion space.*

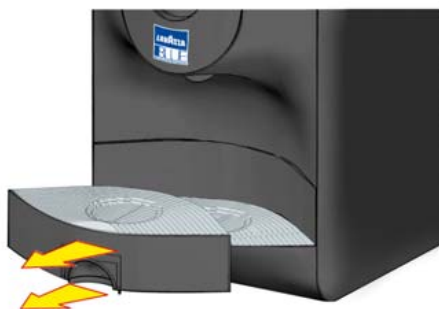
- 3** The machine features two pre-dosing buttons and one free-dosing button.

 Short-time dosing

 Long-time dosing

 Free dosing: when you have the amount of coffee desired, press the coffee dispenser button again to stop the flow.

- i** *If you wish to use different sizes of cups and containers, the drop collecting tray can be removed using the pull handle.*



- 4** Lower the capsule loading lever, then press one of the coffee supply buttons.

**STAND-BY**

- i** *The machine will, after it has not been operated for 30 minutes, enter the stand-by mode; moreover, the free dosing button will be blinking. To start the machine again, either press one of the supply buttons or open the capsule insertion lever.*

- 1 Press down the supply button to be modified for at least 3 seconds: the machine will notify a signal, i.e. the LED will blink (1 second ON, then 1 second OFF).
- 2 Release the button (the coffee supply will start).
- 3 Once the desired amount of coffee has been obtained, stop supply by pressing the same button.
  - The minimum dose that can be set is 20 cc.
  - If the programming does not end within 110 seconds, the supply will be stopped automatically. The machine will notify a signal, i.e. the LED will blink (1 second ON, then 1 second OFF) and the last dose previously set will be stored into the memory.
  - To resume the factory-set values for the set doses, simultaneously press down the two pre-dosed supply buttons for 5 seconds.

## SOLUTIONS TO THE MOST COMMON PROBLEMS

Problem	Possible causes	Solution
The machine does not turn on.	» The machine is not connected to the electric power supply.	» Check to see that it is plugged in.
The machine produces water rather than coffee.	» The capsule loader lever is up.	» Put the capsule loader lever in the down position.
The machine takes a long time to heat up.	» The machine has a lot of calcium deposits.	» Decalcify the machine.
The pump is very noisy.	» There is no water in the tank.	» Fill up with fresh drinking water.
The machine will not supply the product and the button will blink.	» There is no water in the tank.	» Fill up with fresh drinking water.
The capsule loader lever will not close.	» Used capsule drawer is full. » Capsule not inserted properly.	» Empty the used capsule drawer. » Raise the capsule loader lever and insert the capsule correctly.
The coffee gushes out too quickly and the espresso cream does not form.	» The capsule has already been used.	» Insert a new capsule.
The three coffee supply buttons will blink simultaneously.	» Water heating system damaged.	» Bring the machine to an authorized service centre.

## TECHNICAL FEATURES

- |                                     |                            |   |             |
|-------------------------------------|----------------------------|---|-------------|
| • Voltage:                          | 220-240V 50/60 Hz          | • Weight:   | 4,6 kg      |
| • Total wattage:                    | 1200 W                     | • Collector drawer:                                       | 10 capsules |
| • Power absorption (stand-by mode): | < 0,5 W                    | • Material used in the body (accessible parts generally): | ABS + PC    |
| • Tank capacity:                    | 1,7 l                      |   |             |
| • Dimensions:                       | H 280 mm L 200 mm P 320 mm |   |             |

**!** Always ensure that the electricity is disconnected and wait for the machine to cool.

**i** It is advisable to rinse the tank daily. Empty and clean the used capsule drawer every two or three days or after 10 coffees have been made. Never use alkaline detergents, solvents, alcohol or aggressive substances and do not dry machine parts in the oven. Wash the parts (excluding the electrical parts) in cold or lukewarm water using non-abrasive sponges or cloths.

### CLEANING THE COFFEE SPOUT

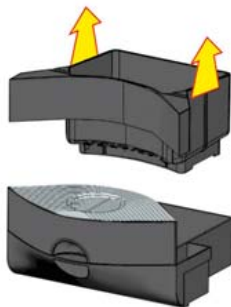
Once a week follow the procedure for **DISPENSING COFFEE** without inserting a capsule.

### CLEANING THE DROP COLLECTING TRAY AND USED CAPSULE DRAWER.

**1** Take out the drop collecting tray/used capsule drawer using the handle.

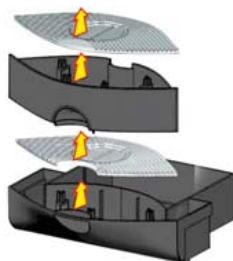


**2** Remove and empty the inner used capsule drawer.



**i** Check periodically to see if the capsule drawer is full in order to prevent malfunction and damage to the machine.

**3** The upper and lower drop collecting trays can be cleaned by lifting their grills. Wash and dry all parts before replacing.



### DECALCIFICATION

The formation of calcium or lime is a normal consequence of using the machine; decalcification/descaling should be done after every 3 or 4 months of usage and/or when a reduced flow of water is noticed.

**i** Decalcification can be done using a decalcification product for coffee-makers of the non-toxic harmless type commonly found on the market.

**!** Do not under any circumstances use vinegar as a decalcification solution.

**1** Empty the tank and fill it with a decalcification product dissolved in water as specified on the decalcification package, turn on the machine and place a container under the spout.

**2** Press the coffee dispenser button and fill a cupful.

**3** Turn off the machine, let it sit for 10 -15 minutes and repeat operations [2] and [3] until the tank is empty.

**4** Wash and fill the tank with fresh drinking water, reposition it and place a container under the spout.

**5** Wait until the machine heats up, press the coffee dispenser button and let it run until the tank is empty.







[WWW.LAVAZZA.COM](http://WWW.LAVAZZA.COM)